



## How long?

Practise your measuring skills using non-standard units.

Find at least 20 identical objects – you might choose toy bricks, coins or buttons.

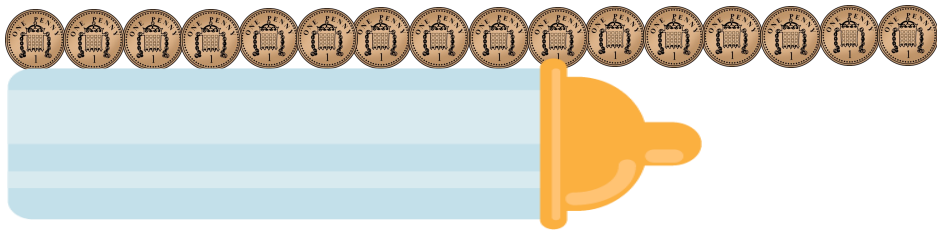
Check that they can be laid side-by-side.



Now, you are ready for some measuring!

Find items around your house that you think will measure less than your 20 measuring objects.

Estimate how many they will measure. Then, line up your item to check.



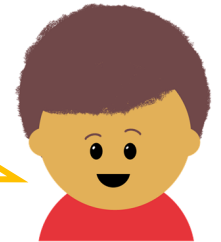
Remember, like the baby bottle above, put the edge of the item in line with the first object you have chosen to measure with.

## Let's do this!



Can you find something that measures exactly 20?

Now, choose a different item to measure with.  
How does that affect your answer?



## Challenge

Look at each one of your measuring items.

Estimate how many of them you will measure.

How can you check without lying down next to them?





## Pasta counting

Make your own 'bead' string.

You will need many items:

- a packet of tubular pasta (penne, macaroni or similar)
- some string or wool (about 1 meter in length)
- poster paint in different colours



First, lay the pasta pieces on a piece of kitchen towel.

Next, paint the shapes in different colours.

When the pasta is dry, thread them onto the string.

(Make sure each piece is not touching a piece of the same colour).



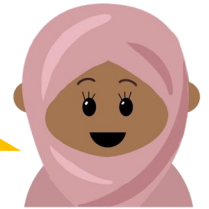
Are you ready for some counting?

## Let's do this!



Now, the fun starts! First, estimate how many pasta shapes are on the string..

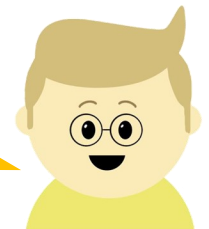
Next, count them in ones.  
How close were you?



Now, count the pasta shapes into groups of 2.  
How many groups do you have?



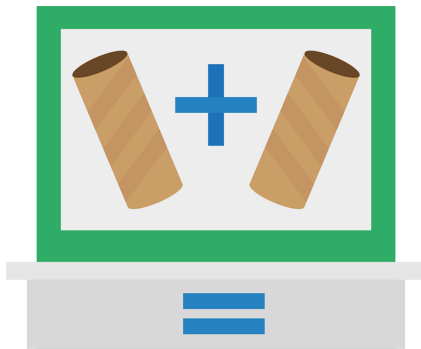
How many groups of 5?  
How many groups of 10?





### Adding machine

Why not make this fun machine to help you practise your addition skills?



All you need are two card tubes, a cereal box and some coloured paper.

With a trusted adult, carefully cut the back off the cereal box and keep the front and sides in one piece.

Stick the tubes to the back of the box with sticky tape or glue.

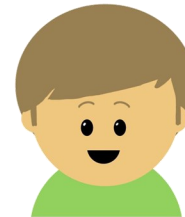
*(This forms the machine).*

Pop the machine upright into the base of the cereal box.

Make an addition and an equals symbol from coloured paper and put them in place.

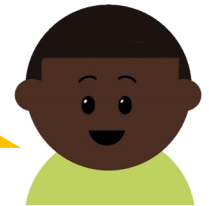
Now, decorate your machine however you like.

### Let's do this!

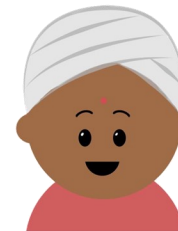


Get ready to practise your addition.

You will need 20 small objects – pasta, marbles, toy bricks or anything that will fit in the tubes.



Write some calculations using numbers to 20.  
For example,  $11 + 6$  or  $5 + 14$ .



For  $11 + 6$ , put 11 objects in one tube and 6 in the other. Now, count how many are in the tray!

