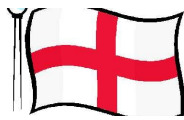




St Peter at Gowts C of E Primary School



NEWSLETTER 2019



POLLING DAY CLOSURES

On **Thursday 2nd May 2019** our school is being used as a polling station. Many people will be accessing our school building therefore in the interests of safeguarding we are forced to close the majority of the school.

School will be closed for children in Nursery, Reception and Y1 to Y5. Only our Y6 pupils preparing for SATs are to attend school on Thursday 2nd May, for the full day. Breakfast Club will be open as normal and there will be no charge for attending on this day. We will finish at normal time. No hot school meals will be provided, children who are entitled to free school meals will be provided with a packed lunch. There will be **no** after school clubs or Kids Club on this day.

We are delighted to announce that we have managed to make alternative arrangements for the 2nd polling day in May and will remain open on May 23rd.

STAFFING UPDATE

We welcome Mrs Billingham back this term after her maternity leave. She will be teaching in our Nursery Classroom. We also wish Miss Jola well as she prepares for her new baby in a few weeks. We welcome two new teaching assistants into our EYFS team - Mrs Androulaki and Miss Percival. We hope our new and returning members of staff have a great term!

FREEZE POP FRIDAY

Freeze-pop Friday is back! Next Friday will see the start of our after school open playground, where children can buy Freeze pops and enjoy the summer in our grounds playing football and other games. Please do stay and play - freeze pops are 20p each and all proceeds go to the school!



CLUBS UP AND RUNNING

CLUBS - There are still a few spaces in clubs this term, please see the Office if your child would be interested in any additional clubs. Please see the office on Monday for more information.

SCOUTING OPPORTUNITY

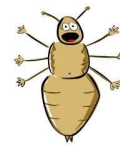


St Peter at Gowts Primary School is proud to offer Beavers and Cubs through the Scouting Programme. The

Scouting Programme provides a structure of badges and awards, which are progressive through the sections, and based on 3 main themes: outdoor and adventure, world and skills. Beaver Scouts are young people aged between 5¾ and 8½ years old. Cub Scouts are young people aged between 8 and 11. We start our scouts groups on **Monday 29th April 5:00pm until 6:30pm** where children and parents can take part in a range of activities and find out more of what is to come, children are welcome to attend free of charge to find out more and then there is a £2.50 charge per session.

HEADLICE

Please take time to check your child for headlice to help stop them spreading. We recommend that all girls tie their hair back to avoid headlice spreading easily.



SUN SAFETY REMINDER

Please could parents ensure that their child has a sun hat, sun cream and sunglasses in school. The sun has been particularly strong in the last few days. Please help us to make sure the children are safe at all times.



Talking Time -

Wisdom—what does it mean to be wise?
Who do you know who are wise in your family?
Which famous people show wisdom?

26th April 2019

Dates for your diary:

29/4/19 - Y3/4 Visit to Woodside Wildlife Park
2/5/19 - Polling Day
3/5/19 - Freeze Pop Friday
9/5/19 -Y1 Class Assembly
W/c 13/5/19 Y6 SATs Week
17/5/19 - PTA AGM 5-6pm
17/5/19 - Family Quiz Night 6.15-8pm
W/c 20/5/19 - Arts Week
24/5/19 - Term 5 ends
3/6/19 - Term 6 starts - children return to school



Attendance

Well done to Year 2 (99.1%) and Year 4 (96.9%) for their great attendance this week.

